

SELLE - BOCCHETTONI - FLANGE

SADDLES - UNIONS - FLANGES

CARTELLE PER FLANGE

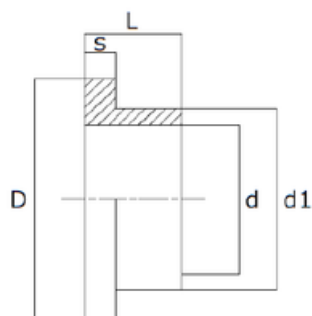
STUB END



| ARTICOLO | MISURE mm |
|----------|-----------|
| CODE | SIZES mm |
| CTL 32 | 32 |
| CTL 40 | 40 |
| CTL 50 | 50 |
| CTL 63 | 63 |
| CTL 75 | 75 |
| CTL 90 | 90 |
| CTL 110 | 110 |
| CTL 125 | 125 |
| CTL 160 | 160 |

SPECIFICHE TECNICHE

TECHNICAL SPECIFICATIONS



| CODE | d | D | S | L | d ₁ | weight (g) |
|---------|-----|-----|----|----|----------------|------------|
| CTL 32 | 32 | 62 | 6 | 24 | 42 | 18 |
| CTL 40 | 40 | 72 | 8 | 27 | 52 | 28 |
| CTL 50 | 50 | 85 | 10 | 30 | 63 | 56 |
| CTL 63 | 63 | 96 | 12 | 33 | 81 | 94 |
| CTL 75 | 75 | 120 | 15 | 36 | 95 | 162 |
| CTL 90 | 90 | 140 | 17 | 40 | 115 | 242 |
| CTL 110 | 110 | 160 | 21 | 54 | 140 | 400 |
| CTL 125 | 125 | 185 | 17 | 48 | 155 | 496 |
| CTL 160 | 160 | 215 | 17 | 66 | 190 | 546 |

Tutti i raccordi TORO 25 sono compatibili con tutte le serie di tubi TORO 25.
All TORO 25 pipe fittings are compatible with all TORO 25 pipe series.

NSF 61 approved

STANDARD:

- ISO 15874
- ISO 15494
- DIN 8077-78

SELLE - BOCCHETTONI - FLANGE

SADDLES - UNIONS - FLANGES

CARTELLE PER FLANGE

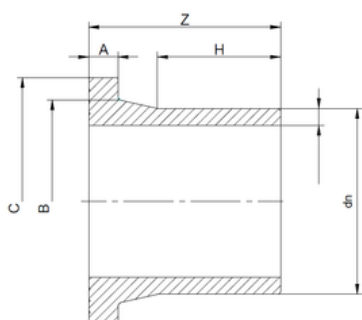
STUB END



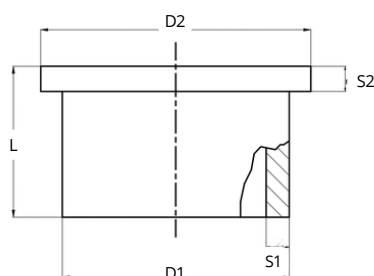
| ARTICOLO | MISURE mm |
|-----------------------------|-----------|
| CODE | SIZES mm |
| BUTT WELDING - SDR11 | |
| CTL 160 T | 160 |
| CTL 200 T | 200 |
| CTL 250 T | 250 |
| CTL 315 T | 315 |
| CTL 355 T | 355 |

SPECIFICHE TECNICHE

TECHNICAL SPECIFICATIONS



| BUTT WELDING - SDR11 | | | | | | | |
|-----------------------------|----|-----|-----|-----|-----|-----|------------|
| CODE | A | H | C | B | Z | dn | weight (g) |
| CTL 160T | 25 | 109 | 217 | 175 | 165 | 160 | 1650 |
| CTL 200T | 32 | 117 | 269 | 232 | 195 | 200 | 3900 |
| CTL 250T | 35 | 128 | 321 | 285 | 199 | 250 | 6100 |



| BUTT WELDING - SDR11 | | | | | | |
|-----------------------------|-----|-----|----|----|-----|------------|
| CODE | D1 | D2 | S1 | S2 | L | weight (g) |
| CTL 315T | 315 | 375 | 32 | 35 | 210 | 6500 |
| CTL 355T | 355 | 435 | 35 | 40 | 225 | 8700 |

Tutti i raccordi TORO 25 sono compatibili con tutte le serie di tubi TORO 25.
All TORO 25 pipe fittings are compatible with all TORO 25 pipe series.

NSF 61 approved

STANDARD:

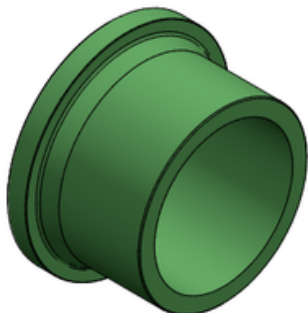
- ISO 15874
- ISO 15494
- DIN 8077-78

SELLE - BOCCHETTONI - FLANGE

SADDLES - UNIONS - FLANGES

CARTELLE PER FLANGE

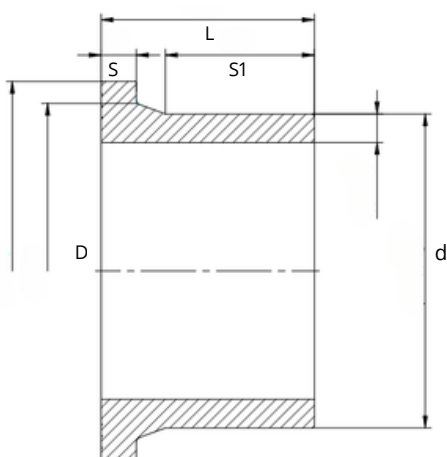
STUB END



| ARTICOLO | MISURE mm |
|----------|-----------|
| CODE | SIZES mm |
| CTL 400T | 400 |

SPECIFICHE TECNICHE

TECHNICAL SPECIFICATIONS



BUTT WELDING - SDR11

| CODE | d | D | S | L | S ₁ |
|---------|-----|-----|----|-----|----------------|
| CTL 400 | 400 | 400 | 45 | 272 | 190 |