

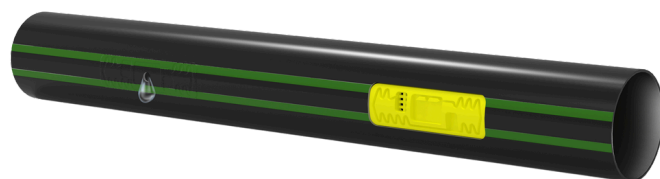
PLUVIO DRIPPING HOSE WITH FAST WATER JETS DRIPPING DEVICE

Dripping hose made on a low-thickness flexible tube made of top quality polyethylene, with a flat dripper with fast water jets.

The dripper is patented by ATP and it is inserted and welded during the extrusion phase at prearranged distances. The labyrinth is designed with large internal passages that create a high turbulence to make it self-cleaning.

The variety of the range makes the pluvio dripping hose suitable for irrigation and fertigation of single-season and multi-season crops: 6 - 8 mils for single-season crops; 10 - 12 - 15 - 18 mils for multi-seasonal crops.

We recommend the use of this product in case of spacing from 15 cm.



APPLICATION FIELDS



open field crops



fertirrigation



one-season and multi-season crops



vegetables and fruit



light sub-irrigation



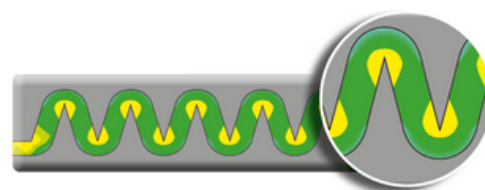
floriculture and gardening



protected crops

FEATURES AND BENEFITS

- Self-cleaning power (minimum pressure 0,3 bar)
- High flow rate homogeneity
- UV resistant
- High accuracy and drilling technology allow an appropriate drip with any flow rate
- High tensile strength
- Easy installation: the the two green lines indicate the correct installation of the hose, which must be always be arranged with the dripper upwards
- Range variety
- Saving water and fertilizers, the percentage of use can be calculated exactly according to the flow rate of drippers and the length of the strokes of use
- Low labour costs
- 100% recyclable



TECHNICAL SPECIFICATIONS

- Labyrinth with large internal passages
- Dripper welded to the inner wall during extrusion
- Dripper with very low CV (coefficient of variation of production)
- Six different flow rate
- Maximum pressure: 0,8 - 1,0 bar (see the following table)
- Recommended filtration: minimum 130 mesh for 1,2-1,6-2,0-2,4-3,0-4,0 l/h / 150 mesh for 0,8 l/h

PLUVIO DRIPPING HOSE WITH FAST WATER JETS DRIPPING DEVICE

RANGE

Ø NOMINAL	THICKNESS		MAX PRESSURE	MINIMUM PRESSURE	FLOW RATE	FILTERING
	mil	mm				
16	6	0,15	0,6	0,3	0,8	≥ 150
	8	0,20	0,7			
	10	0,25	1,0		1,2 - 1,6 2,0 - 2,4 3,0 - 4,0	≥ 130
	12	0,30				
	15	0,38				
22	18	0,45	0,6	0,3	1,2 - 1,6 2,0 - 2,4 3,0 - 4,0	≥ 130
	8	0,20	0,7			
	10	0,25	0,7		1,2 - 1,6 2,0 - 2,4 3,0 - 4,0	≥ 130
	12	0,30				
15	0,38					
	18	0,45				

MAXIMUM LENGHT SUGGESTED (m) - SLANT 0%

FLOW RATE l/h	DIAMETER 16 mm										DIAMETER 22 mm						
	SPACING (cm)										SPACING (cm)						
	10	15	20	25	30	40	50	60	75	100	20	30	40	50	60	75	100
0,8	95	140	149	177	257	288	322	357	383	391	290	380	460	540	600	690	830
1,2	80	115	130	160	200	230	260	290	320	350	240	310	370	435	490	560	690
1,6	65	88	111	128	143	172	198	223	257	309	200	250	300	350	400	450	550
2,0	50	70	90	100	110	130	160	180	200	210	160	210	260	305	345	400	460
2,4	40	60	80	90	100	120	150	170	190	200	140	190	240	285	325	380	440
3,0	30	50	70	80	90	110	140	160	180	190	120	170	220	265	305	360	420
4,0	20	40	60	70	80	100	130	150	170	180	100	150	200	245	290	340	400

STANDARD

- UNI EN ISO 9261:2010
- UNI EN ISO 9001:2015
- UNI EN ISO 14001:2015

PACKING

ROLL LENGHT		
Ø	mil	m
16	6 - 8	100 - 250 - 750 - 1000 - 1500 - 2000
	10	250 - 750 - 1500 - 2000
	12	1500
	15	1200
	18	1000

ROLL LENGHT		
Ø	mil	m
22	6 - 8 - 10	1500
	12	1000
	15 - 18	750



1000 - 2000



250



100