

RUBINETTI - VALVOLE

TAPS - VALVES

CORPO IN PPR PER RUBINETTO A VITONE

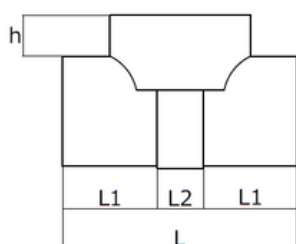
PPR BODY FOR STOPCOCK



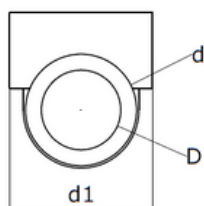
ARTICOLO	MISURE mm
CODE	SIZES mm
RUV 2020S	20 x 1/2"
RUV 20S	20 x 3/4"
RUV 25S	25 x 3/4"
RUV 32S	32 x 3/4"

SPECIFICHE TECNICHE

TECHNICAL SPECIFICATIONS



CODE	d	d ₁	D	h	L ₁	L ₂	L	weight (g)
RUV 2020S	20	40	30	11	28	19	75	74
RUV 20S	20	45	30	15	28	19	75	80
RUV 25S	25	45	35	13	30	15	75	88
RUV 32S	32	48	44	10	40	18	98	132



Rubineti e valvole TORO 25 sono compatibili con tutte le serie di tubi TORO 25
All TORO 25 taps and valves are compatible with all TORO 25 pipe series

STANDARD:

- ISO 15874
- DIN 8077-78