

MANICOTTO PN25

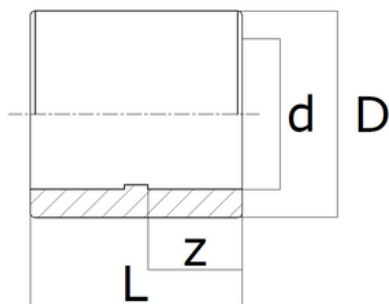
SOCKET PN25



ARTICOLO	MISURE mm
CODE	SIZE mm
MAN 20	20 x 20
MAN 25	25 x 25
MAN 32	32 x 32
MAN 40	40 x 40
MAN 50	50 x 50
MAN 63	63 x 63
MAN 75	75 x 75
MAN 90	90 x 90
MAN 110	110 x 110
MAN 125	125 x 125
MAN 160	160 x 160

SPECIFICHE TECNICHE

TECHNICAL SPECIFICATIONS



CODE	d	D	L	Z	weight (g)
MAN 20	20	30	36	14	12
MAN 25	25	35	40	18	20
MAN 32	32	44	45	20	28
MAN 40	40	56	50	22	56
MAN 50	50	69	56	26	92
MAN 63	63	87	64	30	168
MAN 75	75	107	67	31	274
MAN 90	90	127	74	34	416
MAN 110	110	147	85	38	582
MAN 125	125	157	100	48	678
MAN 160	160	205	98	44	1062

Tutti i raccordi TORO 25 sono compatibili con tutte le serie di tubi TORO 25.
All TORO 25 pipe fittings are compatible with all TORO 25 pipe series.

NSF 61 approved

STANDARDS:

- ISO 15874
- ISO 15494
- DIN 8077-78