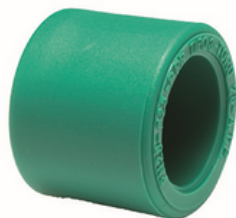


# RACCORDI A SALDARE WELDING FITTINGS

## TAPPO - CALOTTA PN25

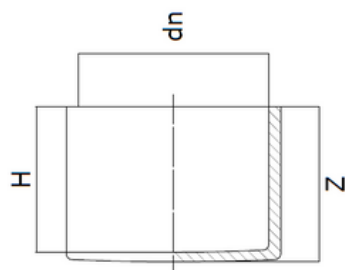
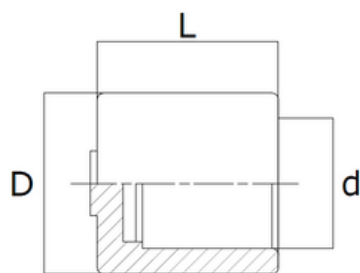
CAP PN25



ARTICOLO	MISURE mm	BUTT WELDING - SDR11	
CODE	SIZES mm		
TAC 20	20	TAC 160 T	160
TAC 25	25	TAC 200 T	200
TAC 32	32	TAC 250 T	250
TAC 40	40	TAC 315 T	315
TAC 50	50		
TAC 63	63		
TAC 75	75		
TAC 90	90		
TAC 110	110		
TAC 125	125		

## SPECIFICHE TECNICHE

TECHNICAL SPECIFICATIONS



CODE	d	D	L	weight (g)
TAC 20	20	28	28	10
TAC 25	25	35	30	16
TAC 32	32	43	33	26
TAC 40	40	55	35	48
TAC 50	50	68	43	84
TAC 63	63	87	49	160
TAC 75	75	95	55	156
TAC 90	90	115	61	240
TAC 110	110	135	70	382
TAC 125	125	155	70	700
BUTT WELDING				
CODE	dn	H	Z	weight (g)
TAC 160T	160	122	130	900
TAC 200T	200	132	157	2400
TAC 250T	250	117	153	4000
TAC 315T	315	155	178	6000

Tutti i raccordi TORO 25 sono compatibili con tutte le serie di tubi TORO 25.  
All TORO 25 pipe fittings are compatible with all TORO 25 pipe series.

NSF 61 approved

STANDARD:

- ISO 15874
- ISO 15494
- DIN 8077-78